

The Resident

Billericay District Residents' Association



"Help us to help you"



April 2025

Photo: Chris Thurman of Photofold Camera Club



***Planning Matters – You still
have time to comment***

PAGE 2

***What's occurring at
Lake Meadows?***

PAGE 4

***Your invitation to the BDRA
Annual General Meeting***

PAGE 3

***Billericay Bowls Club
FREE Recruitment Open Day***

PAGE 5

Your subscription for membership costs £5, which includes 10 editions of The Resident.

Visit the BDRA Website at: www.bdra.org

Billericay Needs You!

BDRA VACANT ROLES

Chair Good Chairs are – Assertive, Decisive, Good Listeners, Adaptable, Diplomatic, Impartial Attentive and Concise.

Do you think you have these skills? Do you care about the future of Billericay? Have you some time to spare?

You sound just like the type of person we are looking for. BDRA now has a vacancy for a Chair.

If you are interested, please contact resident@bdra.org



Road Reps

We are desperately in need of new volunteers to help us distribute and manage our magazine. Can you spare just a few hours a month to help us deliver our magazine to your street?

A Road Representative usually covers the same roads once a month.

Brookside (15)

Contact jimandjanweir@gmail.com

Area Membership secretary for Great Burstead & South Green

Membership Secretaries look after their particular area. The role will normally take a few hours a month and would suit anyone looking to give something back to the community. Use of email would be an advantage. Interested?

Contact resident@bdra.org

Thank You

We would like to thank Marian Clark who has retired as Road Rep for Albion Court, Billericay after almost ten years and send our best wishes for her retirement. We now have Christine West as the new Road Rep for Albion Court and thank her for volunteering.

We have recently heard the sad news of the passing on the 13th February of one of our former Road Reps, Fred Lloyd who was 87. Fred along with his late wife Jean delivered 'The Resident' to houses in School Road, Weir Wynd, Fairview and Laindon Road for many years.



REMINDER...

We can now offer an e-version of The Resident. If you opt to receive the e-version you will be required to pay your subs by bank transfer. If you take the e-version your subs will be £3pa, as opposed to £5pa for the hard copy.

If you receive a hard copy of The Resident and would prefer to pay your subs by bank transfer, please email resident@bdra.org and request the bank details you will require.

BDRA NEWS



"Help us to help you"



Planning Matters

The second public consultation on the new Basildon Local Plan ends on Monday 14 April so you still have time to comment on the council's plans. Please visit www.basildonlocalplan.commonplace.is to take part.

Basildon Borough Council has recently updated its timetable for the new plan and now expects to produce a final version late this year for submission to the Government for examination in January next year. Previously they were aiming to do so by the end of this June. It's clear that there is a lot more to do so that extra 6 months make some sense. There will be a further public consultation on the final plan.

Sadly, we have seen yet another major planning application approved for Green Belt land in Billericay with an estate for 480 houses given the go ahead north of London Road and to the west of Mountnessing Road. This follows the 250 houses approved in January for Green Belt land west of Laindon Road.

In both cases the applications were deemed to be on 'grey belt' land under new planning guidance as they do not contribute strongly to the purposes of the Green Belt. It is becoming increasingly clear that the Government sees house building as the priority over our productive farmland & environment, and Basildon Council are happy to comply by allowing these developments.

We need more houses for local people but the number being proposed through the new Local Plan, in excess of 27,000, is far too many, especially as it will need the widespread loss of the countryside. **Once it's gone it's gone, and it's already being eroded away!**

THE RESIDENT is published by the Billericay District Residents' Association.

Vice Chair: Stephen Chapman. Magazine Coordinator: Viv Burling. Email: resident@bdra.org

BDRA website at: www.bdra.org

Designed and printed by

ACORS PRESS

FINEST QUALITY PRINTERS

Email printing@acorspress.co.uk

The Billericay District Residents' Association Annual General Meeting



21st May 2025 at 7.30pm

As a member you are invited to our Annual General Meeting at

The Parish of The Most Holy Redeemer, Laindon Road, Billericay CM12 9LL

This is your opportunity to meet the Committee and hear about what we have been doing and share your ideas about what we should be looking at in the year to come.

We love to see all our members and volunteers, without whom the BDRA would not exist.

We have arranged for the Deputy HM Lord-Lieutenant of Essex as a speaker.

The agenda will be published in the May edition of *The Resident*, and on the website www.bdra.org. If a member wants to submit a motion or a nomination for the Committee or Independent Examiner, please submit these to the Secretary at resident@bdra.org at least 14 days before the AGM.

Refreshments will be served at the close of the AGM

HAVE YOU VISITED SOUTH GREEN MEMORIAL HALL?



On 8th May 1945, during the V.E. Day celebrations at South Green, an idea was born to build a community hall in memory of those who lost their lives during the conflict.

A fundraising committee was formed and the land was purchased in 1948. Fundraising continued and the South Green Memorial

Hall was finally opened on 7th July 1956. Since then, the hall has been extended and improved by the hardworking committee of

volunteers to provide a meeting place for local activities including Grenfell Preschool, W.I., Village Council, Yoga, Karate, Bowls, Ladybirds, Brownies and Line Dancing, as well as being the local polling station and venue for children's parties and other events. The hall can be booked through the website www.southgreenhall.co.uk

On Bank Holiday Monday 5th May the hall is holding a V.E. Day commemoration from 10.30 to 2.30 with displays, stalls, refreshments, children's activities, and information about the groups that use our hall. Admission is free and open to all so pop along and see what we have to offer.



CRYSTAL PRINT co UK

PRINTING SIGNAGE WORKWEAR

Building Plans
Colour while u-wait

Colour Copying
from 9p (based on 1000)

Van Graphics



E: sales@crystalprint.co.uk
W: www.crystalprint.co.uk
22 Western Rd, Billericay CM12 9DZ

01277
650661

What's Occurring at Lake Meadows?



If you've been to Lake Meadows recently you may have noticed that the café, has been closed for refurbishment, and opened looking very smart on the 1st February, as Lakeview Palace, under a new leaseholder, Mike.

Mike doesn't come from this area and still runs a very successful similar premises in Lodge Park Hornchurch, which is also called Lakeview Palace. He has undertaken a total refurbishment of the café, with new flooring furniture and décor as well as installing heating as the café will be open 52 weeks of the year. He is now offering a full menu seven days a week, from 8.30 to 17.00.

There is something available for everyone, all day breakfast, lunches, including a special of fresh fish on Fridays, gluten free and sourdough

bread, protein smoothies and a vegan menu, as well as deserts and cakes. Cakes are baked and delivered fresh from a local supplier, Clairey Fairy Cakes, based in the High Street.

Staff include Mike, Alexandra, Yaseen and Ugur in the kitchen. Mike and his team have found Billericay and warm and welcoming place, so if you are thinking of walking the dog, (it's also dog friendly), taking the kids out for some fresh air, or just looking to meet friends for a chat, head for Lake Meadows, stay a bit longer and visit Lakeview Palace.



Stock Drama Group
presents...

LAYING THE GHOST

By Simon Williams

Wednesday 23 to Saturday 26 April
at Stock Village Hall · Curtain up 8.00pm

Margot Buchanan is a witty ex-actress in a retirement home. She is visited by a young actress who is having an affair with Leo, Margot's ex-husband and by Leo's current wife Judy. Leo arrives but suffers a fatal heart attack. Thus, the scene is set for chaotic hilarity as Leo's ghost appears, anxious to sort out matters between his three women, and visible only to Margot's psychic friend Freda.

Ticket price £12 · Tickets available from
www.ticketsource.co.uk/stockdramagroup
or telephone 01277 840737
or Exclusive Dry Cleaners, Holly Court, Billericay

Doors open 7.30pm



Billericay Choral Society

Stainer's Crucifixion

*With music by Mozart,
Schubert & others*

**Sunday 6th
April 2025**

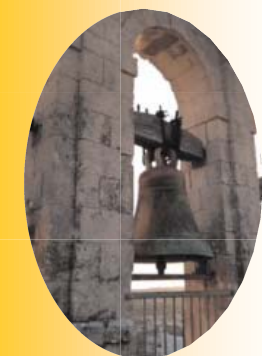
**Methodist Church
Western Road
Billericay CM12**

Director Ed Sutton

Organ Philip Prior

Tenor Ashley Thompson

Bass Ben Foulser



TICKETS £10 in advance (£12 on the door)

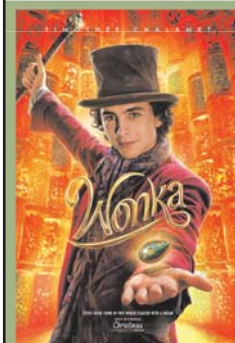
available from:

Slipped Discs, Billericay High Street (cash please)

Online via website www.billericaychoral.co.uk

Registered charity No 271059 Billericay Choral Society aims to advance the education of the public in choral works by the presentation of public performances

BILLERICAY COMMUNITY CINEMA



Wonka

Sunday 18th May (2023, PG)

Tickets £4.00 from Billericaycine.com

Doors open 2:30pm, film 3pm

**A cuppa, home made cake,
a natter & a film
That's Sunday Matinee**

SUNDAY MATINEE

Coming soon to Billericay Community Cinema



WHERE TO FIND US

The Chantry Centre - between Ravens and The Chequers

BILLERICAYCINE.COM



Billericay Bowling Club is at the heart of the town, located in the beautiful Lake Meadows park, and the game is rich in history.

History

Bowling was first played in the UK in 13th century, but a version of the game was played by the Ancient Egyptians.

to the back garden of Mr C J Taylor, the corn merchant who lived in the High Street adjacent to Rose Lane, occupied by Lloyds Bank until recently.

Billericay Bowling Club was founded in 1929 with the original green in a back garden in Western Road. In 1933 it moved

In 1935 the club moved to its present site in Lake Meadows, disbanded play during WWII and reformed in 1948.

The Game

Bowls, is mainly played on grass or "green" and is known as lawn bowls or lawn bowling. It is classed as a sport and after football, bowls has the second highest number of clubs in the country. Players try to roll their bowl closest to a small "jack". The bowls are designed so that they turn slightly when rolled. The game can be played in Teams or individually.

The Benefits

Bowling is a fantastic way to have fun, enjoy the fresh air, exercise and make new friends. Whatever your physique, bowls is a sport for everybody, and it will help improve your fitness levels and mental wellbeing.

Inclusive

At Billericay, we have 95+ members of varying ages and abilities.

We have diverse ways of enjoying the sport to suit all. Some of our members love playing 2 hours of social play, once or twice a week. If the bowling bug really bites you there are opportunities to play more frequently in various competitions and in friendly and league games against local clubs. Some of our members have progressed to playing at County level, (sooner than you might think!).

Why not give it a go

During the Summer season (May to September) we play seven days a week, depending on the weather, so lots of opportunity to play regardless of whether you are retired, still working or even a student.

It is normal to feel slightly apprehensive about starting

something new, but bowls is a sport that is easy to take up. The rules of the game are simple, the basic technique is not complex, and you don't need lots of new kit.

Support

Whether you come and see what it is all about at our annual Open Day or by making a separate appointment:

- The 'have a go' sessions are free, as are follow up coaching sessions for those that want to get more experience.
- We give people the opportunity to find out what lawn bowls is all about and Bowls are available to use. The only 'must' is to come equipped with flat-soled shoes or trainers.
- Club members will help cover the fundamentals of bowling in a fun way.
- Up to four more free sessions can be arranged, giving you the opportunity to see whether membership of the club is your next step.
- If you decide to join, our new members are allocated a 'buddy' to guide them through the early days and further coaching is available on a one-to-one basis by qualified coaches. At no extra cost!

Please contact:

clubsecBBC@btinternet.com
or

Susan Farmer, Membership Secretary – 07907 193080

**Billericay Bowling Club
c/o Lake Meadows Park
Billericay
Essex
CM12 0AQ**




Sponsored by
Andrew Skinner
01277 563609
www.andrewskinnerwealth.co.uk

NEW MEMBERS ALWAYS WELCOME
Enquiries: 07907 193080
www.billericaybowlingclub.co.uk

Billericay Bowling Club is based in Lake Meadows Park and will be holding a
FREE Recruitment Open Day
on Sunday 4th May 2025 from 10.00 a.m. to 3.00 p.m.

Q: Can I have a go to see if I like it?
A: Yes, just contact Sue on 07907 193080 in advance to book a free one hour session.
 This is a **Fun Day** and all ages and abilities are welcome.

Q: Do I need any special equipment?
A: Only flat soled shoes. We will supply the bowls.

Q: Is coaching available?
A: If you enjoy the Open Day we will be arranging several coaching sessions during the next 2 to 3 weeks.

Q: How often can I bowl?
A: Our summer season outdoors starts on 1st May and ends on 31st September.
 Practice bowling is available every day and Club games take place on Monday afternoons and Thursday mornings.

Q: What happens after I join?
A: Each new member is allocated a 'buddy' to guide them during the early days and coaching by qualified, friendly coaches is available on a one-to-one basis.

Spring has finally arrived at the park! After the long dark winter with its grey skies and buckets of rain, at last the sun and blue skies by day have given way to wonderful clear starry nights. We have been fortunate to see the rare progression of the planets across the skies, with Venus shing brightly and pink Mars easily identified.

Photographs by Sarah Clapton



Cornelian Cherry



Pink Camellia



Anemone Blanda



Hellebores

Everywhere you look flowers, shrubs and trees are bursting into bud and we are fortunate in having some unusual ones in the park. A pink camellia in the Garden of the Child, and a larger one in the rhododendron bed, have been heralding the way for others to follow, with catkins dancing on the nearby contorted hazel tree. Bright yellow aconites have appeared and disappeared and snowdrops and blue anemone blanda have appeared in succession. Near the Lake Avenue entrance, almost hidden amongst other shrubs, is a cornelian cherry (Cornus Mar), with its dusting of unusual yellow flowers. Opposite, the mass of hellebores share the fern bed with new fern fronds and a host of golden daffodils, whilst others trumpet Spring's arrival from the rhododendron bed.

Our gardeners are back at work again and they look forward to other new people joining us soon. There is always plenty to do at this time of year, so anyone who feels like joining our friendly group on a Tuesday morning, from 9.30am, will be most welcome. You do not need any special gardening skills, just turn up with gardening gloves and sensible shoes. We have lots of tools!

Although fewer than in previous years, many waterbirds are returning for the summer, with a lovely long-legged heron recently seen, as well as a swan and our friends the Canada geese. The air is filled with birdsong again and the woodpecker's drumming. Pleasingly, blue tits have been busy building their nests in our wooden nesting boxes. In early May, we shall be holding our annual early morning bird walk. You will need to be up early to join the group – details are on our website

www.lakemeadows.org.uk

Please book online.

Blasted Memories



Slate house signs made to measure.

Personalised glass engraved gifts for all occasions.

Contact Colin who will be happy to help you



01277 655613 / 07749 710489

www.blastedmemories.com [Facebook.com/blastedmemories1](https://www.facebook.com/blastedmemories1)

Your lasting legacy.

Leaving a gift in your Will to St. Luke's Hospice – even just a small percentage of your estate – is one of the most valuable and lasting ways you can support our caring work.

St. Luke's Hospice is an innovator in the delivery of palliative and end of life care. Your lasting legacy will help us to continue to provide relevant and much needed services for local people with life limiting illnesses, and their families.

Contact our Legacies team for a free information pack today:

Call: 01268 524973

Email: legacies@stlukeshospice.co.uk

Visit: www.stlukeshospice.com/legacies

St Luke's Hospice (Basildon & District) Ltd. | A Company Limited by Guarantee No. 1812104 | Registered office: St. Luke's Hospice, Fobbing Farm, Nethermayne, Basildon SS16 5NJ | Registered Charity Number 289466

St. Luke's Hospice



Top 10 reasons to review your will

Spring is the perfect time to refresh and reassess important matters – starting with your will. Personal circumstances can change, and it is essential to ensure your will reflects those changes. We advise you to review your will every few years or when you have a significant life event.

Here are 10 reasons to update your will:

- 1. Updating your will when you buy a property** – A new property affects your estate value and distribution. Ensure your will reflects these changes, including specific gifts.
- 2. Loss of an executor or beneficiary** – If someone named in your will has died, update your executor and beneficiaries.
- 3. Marriage, civil partnership, or divorce** – Marriage revokes your will unless made in

contemplation of it, while divorce can affect how your estate is distributed.

- 4. Having children** – Include provisions for your children, including guardianship for those under 18.
- 5. Losing your original will** – If you lose the original, it may no longer be valid. Consider safekeeping with a solicitor.
- 6. Financial changes** – Significant financial shifts may affect your estate's distribution or tax implications.



- 7. Executor review** – Ensure your appointed executor is still suitable, especially if there have been changes in their circumstances.
- 8. Disinheriting someone** – If you no longer wish to include someone, update your will to reflect this decision.
- 9. Debts of a beneficiary** – If a beneficiary develops financial issues, consider setting up a Trust or removing them entirely.
- 10. Changes in the law** – Legal changes, such as in inheritance tax

laws, may require adjustments to your estate plan.

Regularly reviewing your will ensures your wishes are followed. If you do not have a will, now is the perfect time to arrange one.

Contact us today to schedule a review or consultation with one of our specialists.

Claire Read

0330 818 3294

claire.read@birkettlong.co.uk

it's not just about knowing the law,
it's also about the impact we have on businesses and our communities

FOR EXPERT LEGAL ADVICE
PLEASE CONTACT
ENQUIRY@BIRKETTLONG.CO.UK
BIRKETTLONG.CO.UK
01268 244144

Basildon
Chelmsford
Colchester

www.birkettlong.co.uk



herefor**good**



The George Hurd Activity Centre

Over 50's Activity Centre based in Basildon
Open Monday to Friday 10.00am – 4.00pm

We offer a range of over 25 classes, from Art to Bowls, Keep-fit to Sit-Down Yoga, Card Making to Ballroom.
We also have a warm and welcoming lounge and Tea Bar area, so you can enjoy activity as well as socialising.

- Classes £2.50 - £3.50
- First class is **free of charge**
- Monthly trips are on offer and we have regular social gatherings here at the centre

- Membership £4 per month + annual £4 committee fee
- Members only
- On site Car park
- Hairdresser

Audley Way · Basildon · SS142FL
Telephone: 01268 205305/6

F. E. FARRER

FUNERAL DIRECTORS & MONUMENTAL MASONS
5th Generation Family Owned Since 1860

Private Chapels of Rest
Home Visits Arranged
Pre Paid Funeral Plans

Memorial Headstones, Additional Inscriptions and Renovations
Rolls Royce & Daimler Fleet - Horse Drawn Carriages
Green Funerals & Woodland Burials

33 High Street
Billericay
01277 622944

246 Hutton Road
Shenfield
01277 216030

For Immediate Personal Attention, Day and Night
www.fcfarrer.co.uk

Publication of an advertisement in this newsletter does not indicate editorial endorsement

7



HANDYMAN

HOME REPAIRS

GENERAL BUILDING SERVICES

01277 562095

www.mayhomeimprovement.co.uk
info@mayhomeimprovement.co.uk



self Stable Storage

Moving home • De-clutter
DIY • Small Businesses
Retiring • Bereavements
Garden Equipment • Renting

HOW MUCH DOES IT COST?
We have rooms ranging from 10 to 300sqft and prices start as little as £5 a week

DO I HAVE TO SIGN A LEASE?
No. You sign a straightforward storage licence agreement prior to moving into your unit.

• 5 minutes from the highstreet
• Unlimited access during our extensive opening hours
• Ample parking and drive-up access
• Access 365 days a year
• No long term commitments
• Your own padlock, only you hold the key
• Unique security pass - code
• 24hr CCTV cameras

MAN AND VAN AVAILABLE

- Collections & Deliveries
- 1 Tonne Hi-Ab
- 12m Cherry Picker

01277 658001 www.stableselfstorage.com
Elmshaws Farm, Tye Common Road, Billericay, CM12 9SB



MILLER DECORATING

- Dustless Sanding
- Spraying
- Wallpaper Hanging
- Interior & Exterior Decorating
- Residential & Commercial

07930 603915

dave@millerdecorating.info

[millerdecorating](https://www.instagram.com/millerdecorating) [f](https://www.facebook.com/millerdecorating)

Computer repairs & IT Support

Home and Business computer repairs and IT Support
Professional Microsoft Certified Technician
13 years of experience providing IT solutions

Call Andrew on **07590 057809** or **01277 523456**
andrew@a1pcservices.co.uk



Janet Hibberd
Floral Designer
Specialising in funeral tributes
01277 650276
FlourishingFlowers.co.uk [f](https://www.facebook.com/flourishingflowers) [i](https://www.instagram.com/flourishingflowers)



Mark Hatch IOC
CARPENTER & JOINER



Architraves, Skirting, Internal, External Doors & Frames, Garden Gates, Stairs Spindles, Handrails, Built-in Cupboards, Bookcases & Shelving, Study & Bedroom Furniture, Wood Flooring, Staining & Polishing, Furniture Restoration.

01277 625908 07956 444483
www.markhatch.co.uk

A J Turner
Paving Specialist

Brick drives • Tarmacadam
Pattern imprinted concrete drives • Patios
Turving • Brick work • Fencing

For all your outside work call Jay on

01277 375901 or 07887 523455

Paving@ajturnerbuilders.co.uk

WWW.ajturnerbuilders.co.uk

S&D BANKS LTD

Plumbing & Heating

Free Quotations



- Full Central Heating
- Toilets / Sinks & Taps
- Power Flushing
- Pressurised Hot Water
- Bathroom / Shower / Tiling
- Water Heaters / Cookers / Gas Fires
- Electrical Maintenance
- Replacement Boilers
- Landlord Certificates
- Radiators / Pipes / Overflow
- Blocked Drains / Leaks
- Solar Hot Water Installations
- L.P.G., Natural Gas, Oil
- Underfloor Heating

(All work guaranteed – fully insured)

- ★ Landlord Gas Safety Certificate £65.00 + VAT
- ★ Boiler Service from £65.00 + VAT
- ★ Power Flushing from £285.00 + VAT
- ★ Free energy efficiency consultations available on request
- ★ Installer of Air Source Heat Pumps



Billericay 630236 Mobile: 07742 505011/07805 935912 email: sdbanksplumbing@gmail.com www.sdbanksplumbing.com

25 years in the trade

TLC Bathrooms

Full bathroom installations · Plumbing · Wall & Floor Tiling
Electrics · General Maintenance · Silicone sealants

Call us today for a FREE quote!

Steve Reader – based in Billericay

steveread@aol.com www.tlcbathrooms.co.uk

01277 626219 or 07765 400860

www.foxpath.co.uk

F.A.Ingram

Carpentry & Joinery

Fine interiors & bespoke joinery

Advanced City & Guilds qualified
From skirting to loft conversions
Kitchens, cabinets, bathrooms etc

07962 172658
or 01245 600428

MSM Electrical

Looking after all your electrical needs since 1986

We offer:

- Free estimates
- Professional, reliable, and friendly service
- Fault finding
- Extra lighting and power points
- Fully insured

Call Mick on

01277 650839 / 07968 641897 or

Email: msmelec@hotmail.co.uk

CARPET & UPHOLSTERY CLEANING

Ring Steve on 01277 654608 or 07836 337093



Austin Jones Group – Est. Since 1989
www.austinjonesgroup.co.uk



BILLERICAY TOWN FOOTBALL CLUB

Support Your Local Football Club

Dates for your Diary!



Town Council Meetings

- **Billericay Town Council Meetings** Planning, **15th and 29th April**; Health, Wellbeing and Environment **8th April**; Finance and General Purposes **17th April**; Town Council **24th April**



Clubs and Societies

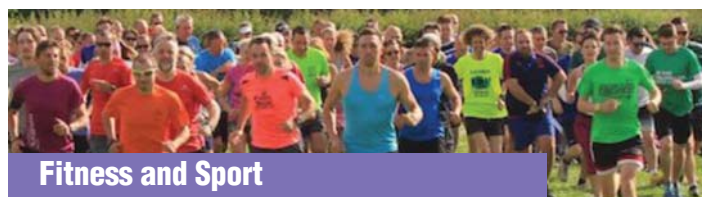
- **Anna's Place** For older adults. Dementia friendly. Crafts, puzzles, games, music, singing, lunch and refreshments 10.30am -2pm **every Tuesday**, Christ Church Hall, Perry Street, Billericay. For more information phone 01277 630144
- **Basildon Mind** A local Charity focusing on helping people with their mental health. We hold pop-ups at the Humankind Café **every Wednesday**. We are still looking for Billericay Representatives. Contacts: 01268 289700, john@basmind.org
- **Billericay Archaeological and Historical Society** meet at The Fold, Laindon Road, **Monday April 14th** AGM at 7.30pm, 'The Commonwealth War Graves Commission Archives' Alan Murdey Non-Members £2, Raffle £1, refreshments £1 per person. Contact alantaylor8@btopenworld.com
- **Billericay Art Club at The Fold Thursdays** 9.30-12.30 New members wanted to join small group of friendly, encouraging amateur painters at The Fold Refreshments and free parking available. Call Eileen on 01277 659347 for more information
- **Billericay Choral Society** – Come and Sing, **Tuesdays** at 7.30pm at Methodist Church, Western Road, Billericay. For more information contact www.billericaychoral.co.uk
- **Billericay Flower Arranging Group** meet on **1st Wednesday of each month** at 7.30pm for 8pm start in WI Hall, St Edith's Lane, Billericay. Visitors welcome at £7 each. Contact Linda Gilbey on 01277 656217 or email lgilbey@oal.com
- **Billericay Horticultural Society** Epimediums David Sisley. Meet at Chantry Centre from 8-10pm. Visitors welcome £3.00. Refreshments available 43trouble@gmail.com
- **Billericay Lions Club** meet in The Duchess Suite at The Duke's Head PH on the **second and fourth Mondays every month** 8-10pm. If you would like to make new friends, whilst helping those less fortunate than yourself, please get in touch 0345 833 9849. For more information www.billericaylions.com
- **Billericay Men's Shed** Generally **fortnightly – Mondays** – Coffee n chat, **Tuesdays** – Woodworking, **Wednesdays** – Volunteer supported sessions for those with dementia and their carers.-Lake Meadows to the front of the bowls building, just beyond the bowling green. Contact billericaymensshed@gmail.com or phone 07544 752686
- **Billericay Branch of The Mother's Union** meet on **4th Wednesday each month** at 1pm for 1.30pm start in the Mayflower/Pilgrim Rooms of The Emmanuel Archer Hall 66-68 Laindon Road, Billericay CM12 9LD. We have a variety of Speakers and activities, Contact Pauline 07939102945
- **Billericay and District Parkinsons Support Group** We have **every Monday and Tuesday** at 11.30am at Studio360 our exercise classes; **every other Tuesday** Let's Sing Group meet at 2pm in Christchurch, Wickford, our Walk and Talk Group meet **every Thursday** at 11am at main entrance of Lake Meadows to walk a loop or two and tea at the end; Monthly meeting on **3rd Saturday of each month** at Emmanuel Hall at 2.30pm.
- **Carers Peer Support Group** meet at 2pm in Education Room of Billericay Medical Centre on **last Monday of the month**. To book: Contact Jenny. Goodson@carersfirst.org.uk
- **Chelmsford and District Welsh Society** Annual Concert presenting Godre'r Aran Male Voice Choir at Chelmsford Cathedral **Saturday 17th May** at 7.30pm. Doors open 6.45. Tickets £22.50 per person. Contact chelmsfordwelsh@gmail.com or phone 07724144432
- **Gone Too Soon** Bereavement support group for Parents who have lost a Son or Daughter in any circumstances and if recent or a while ago. Meet at The Chantry Centre, Chantry Way **Monday 14th April**. Parents are given a warm and friendly welcome in a safe environment. Contact Lyn on 07387805406 or e-mail lyn-currie@hotmail.co.uk www.gone-too-soon.online
- **Hearing Help Essex** – Hearing Aid Support Session. **Monthly** maintenance sessions for NHS hearing aid users at The Chantry Centre. To book an appointment call 01245 496347, text 07950 406173 or book online at www.hearinghelpessex.org.uk
- **Offshoots Singing Group** meet on **1st and 3rd Wednesday of each month** at St Johns Church, Outwood Common Rd CM11 2LE from 7.45-9.45pm. No auditions. Parking on site. Contact geoffrudd47@gmail.com or phone 07763424206
- **Mill Meadows Society Thursday 10th April** 7.45pm The Chantry Centre CM11 2AP AGM followed by talk – 'Essex Rock' by Ian and Ros Mercer. Free admission. Non-members welcome. Refreshments available. Website millmeadows.org.uk, Email admin@millmeadows.org.uk
- **Photofold Camera Club** meet at The Chantry Centre, Chantry Way on **Tuesdays** 8-10pm, doors open at 7.30pm. Info at www.photofold.org.uk
- **Probus Retired Men's Club** Join other retired professional and businessmen at our monthly lunch, usually with a Speaker. Contact Steve on 07817 694980 or stevejk88@outlook.com for more details.
- **Probus Club of Billericay and Shenfield** welcomes retired gentlemen members to our 3-course lunch meetings, which includes a guest Speaker at Mount Avenue Banqueting Suite, Hutton on the **last Thursday of every month**. Please contact ianmarshall112@gmail.com for more information.

- **Billericay Ladies Probus Club** If you are retired and would like to make new friends, join us for a **monthly** lunch, chat and speaker. Contact stephanie4probus@gmail.com for more details.
- **Outwood Common Tenants and Residents** Chat with a Cuppa – A warm space and a friendly face **every Friday** 10-11.30am, for an informal chat, a cuppa and biscuits. Everyone welcome. St John's Church, Outwood Common Rd CM11 2LE
- **Remus Horse Sanctuary 12th April** Cake Decorating Workshop Easter Bunny Cake at Billericay Reading Rooms 11am-2pm. £45 per person, included sugar paste, modelling paste and cake board; **27th April** Online Auction via Remus Facebook Page. Starts 11am; **27th April** Curry Lunch at Nirvana Indian Restaurant, Ingatestone. £20 per person. 2pm for 2.15pm start. Booking essential; **4th May** Open Day at The Sanctuary 1-4pm. Refreshments available. Call Office – 01277 356191. Contact <https://www.remussanctuary.org/events>.
- **Royal British Legion Billericay Branch** meets on **last Wednesday of the month** at 8pm in the Chantry Centre. You don't have to have served in the Forces to join or help. Contact Derek on 07757 313688, derekprior@hotmail.com
- **South Green Memorial Hall V.E. Day Commemorations Bank Holiday Monday 5th May** 10.30-2.30. FREE ADMISSION. Displays, stalls, refreshments, children's activities Come and see what groups meet regularly in our Hall Southend Road CM11 2PR, contact 01277 653369
- **Stock Brook Ladies Probus Group** meets on the **3rd Wednesday of each month** to listen to a speaker and take lunch together at Crondon Park Golf Club. All are welcome. Please contact stockbrookladiesprobus@talktalk.net for more details.
- **The Next Chapter Bereavement Group** We meet **every 2nd Saturday of the month** at Emmanuel Church Hall at 10.30am-12.30 for coffee and chats for widows and widowers. For more information ring Sandra 07957 348006
- **APPLE Bridge** Friendly Club meets at Hannakins Farm, Rosebay Avenue on **Wednesday mornings** for duplicate sessions at 9.45. Sessions cost £4 per session. Bring own refreshments. Contact 07552 753075

- **Anne Owen Bridge Club** meets at Hannakins Farm Community Centre, Rosebay Avenue CM12 0SY on **Tuesday afternoons** at 1.15pm for 1.30pm start for friendly bridge. Members £3, Visitors £4 per person per session. For further information, contact Mrs Janet L'Estrange on 01277 624078.

The WI

- **Billericay WI** meet at the WI Hall, St. Edith's Lane at 2pm on the **first and third Wednesday of each month**. Contact 01277 624255.
- **Buttsbury (Billericay) WI** meet on the **2nd Tuesday of the month** at Canon Roche Hall 8pm-10pm. New members welcome. For more details contact Jan Nash on 01277 630147
- **Little Burstead WI** meet on the **second Thursday of the month** from 2pm-4pm at Little Burstead Village Hall. Contact 01268 491396
- **South Green WI** meet on the **third Thursday of the month** at South Green Memorial Hall, Southend Road. CM11 2PR. Contact 01277 652739



Fitness and Sport

- **Billericay parkrun** Every **Saturday** 8.45am at Lake Meadows, parkrun provides a free, timed 5k run, jog or walk for all standards from 4years+ Visit www.parkrun.org.uk/billericay or visit our Facebook page.
- **Lake Meadows junior parkrun** Every **Sunday** at 8.45am at Lake Meadows, parkrun provides a free, timed 2k run, jog or walk for all standards from 4-14 years. Visit www.parkrun.org.uk/lakemeadows-juniors/ or visit our Facebook page: Lake Meadows junior parkrun
- **Billericay Town Walking Football** We train at Billericay Town FC. Men 50+on **Mondays** 8pm-9.30pm and **Thursdays** 10am-12pm (£6 per session) **Mondays** 7pm-8pm for Ladies 40+ (£5 per session). E-mail Bill at btfcwf@gmail.com
- **Outwood Common Tenants and Residents** – Seated Yoga **Friday** 11.15-11.45am at St John's Church. £1.50 a session. **First session free**. Open to everyone of all ages and abilities

To advertise your event here, please email resident@bdra.org

Deadline for the next issue is 10th April for events taking place between 10th May and 9th June

THE
CHIROPRACTIC CENTRE
BILLERICAY • BRENTWOOD

DO YOU HAVE PAIN?

Call us **TODAY** on
01277 631025

★★★★★

- Low back pain
- Neck pain (including Whiplash)
- Hip and knee osteoarthritis
- Shoulder pain
- "Frozen" shoulder
- Tennis elbow
- Knee pain
- Plantar Fasciitis
- Dizziness (cervicogenic)
- Migraine and headaches

Computer Problems?

Don't struggle to carry it up to the shop or put up with expensive call out charges.

Call Gary Mander,
Computer Technician
on 01277 636358
for a no obligation chat

Gary@PCTechnician.co.uk

No Call Out Charge!



Billericay District Residents' Association COACH TRIPS



**ON THE DAY OF THE TRIP ONLY
THE EMERGENCY CONTACT
NUMBER IS 07518 122647**

Please note that all payments should be made as soon as possible and sent to the person named on the trip advertisement. Cheques should be made payable to BDRA and the trip title shown on the back of the cheque.
Departure points for all trips:

QPR – Queens Park Roundabout (for holiday trip only), GG – Gooseberry Green, bus stop at roundabout, OA – Orchard Avenue, approaching Stock Road, LR – Laindon Road, bus stop between Sun Corner and the fire station, SG – South Green, bus stop to Wickford, opposite the retirement apartments

Please note – When a trip is confirmed the fare must be paid as soon as possible.

If you are a solo traveller on a trip, we ask you to provide a contact number when booking, in case of an emergency on the trip.

★ ★ ★ ★ ★ ★ ★ ★ ★ ★ **THURSDAY 10TH APRIL 2025 – RYE ON MARKET DAY WITH FISH AND CHIPS AT THE PILOT INN** **FULL – PLEASE PAY NOW**

Depart: GG 8.15am. OA 8.20am. LR 8.30am. SG 8.35am. Back in Billericay approximately 7.30pm.

**Kathleen Fox, 72 Perry Street, Billericay,
Essex CM12 0ND.**

Telephone 01277 622342

★ ★ ★ ★ ★ ★ ★ ★ ★ ★ **BLETCHLEY PARK THE HOME OF THE CODEBREAKERS – SUNDAY 18TH MAY** **SEATS AVAILABLE**

Find out where it began and discover the story of the amazing achievements of the WW2 Codebreakers in the place where it happened. Explore 11 historic buildings, visit the iconic mansion, step inside the restored codebreakers huts, take in the faithfully recreated interiors. Discover 12 exhibitions and the wartime blocks. Immerse yourself in a cinematic experience, enjoy interactive displays and hands on exhibits. Marvel at the extraordinary achievements made by brilliant minds and complex machines.

New for 2025 is a temporary exciting exhibition discovering how Artificial Intelligence is a part of our lives today and how AI can affect our future. There are free guided tours and multi-media guides. Relax in one of two cafes for lunch and refreshments.

Cost: £43.50 Coach and Entrance

Depart: GG 8.00am. OA 8.05am. LR 8.15am. SG 8.20am. Back in Billericay approximately 6.30pm.

**Yvonne Cave, 11 The Vale, Stock, Ingatestone,
Essex, CM4 9PW.**

Telephone: 01277 840560

★ ★ ★ ★ ★ ★ ★ ★ ★ ★ **A VISIT TO ROYAL TUNBRIDGE WELLS, LUNCH ON THE SPA VALLEY RAILWAY AND TIME PERMITTING A STOP AT POLHILL GARDEN CENTRE – SATURDAY 12TH JULY** **PLEASE PAY NOW**

On leaving Billericay we make our way to the charming historic town of Royal Tunbridge Wells, which has been attracting visitors for 400 years. We will be here before our train trip, to allow us to explore some of the town and The Pantiles which is the old part of the town, where there are shops galore, or just enjoy a cup of coffee in one of the many cafes. Tunbridge Wells West station is located at The Pantiles end of town which is a 10/15 minutes' walk. We board our train at 12.30pm and depart at 12.45pm. Our freshly prepared fish and chip

lunch will be served on our journey and includes a drink and cake dessert. On our journey home and time permitting we are planning to stop at Polhill Garden Centre to end our day.

Cost: Coach, Train Tickets, Fish/ Sausage and Chip Lunch (Veggie Burgers & Chips are available). £50.50

Unfortunately, the railways are unable to cater for vegans or gluten free requirements, due to their suppliers.

Depart: GG 8.30am. OA 8.35am. LR 8.45am. SG 8.50am. Back in Billericay approximately 6.30pm.

Due to Spa Valley Railway requiring payment on the 17th May, to enable this trip to run, please phone to book a.s.a.p.

**Yvonne Cave, 11 The Vale, Stock, Ingatestone,
Essex, CM4 9PW.**

Telephone: 01277 840560

★ ★ ★ ★ ★ ★ ★ ★ ★ ★ **THE SAVILL GARDEN AND 2 HOUR THAMES CRUISE WITH CREAM TEA – THURSDAY 26TH JUNE**

★ NEW TRIP ★

Our first stop is The Savill Garden a hidden gem in the heart of Windsor Great Park. There will be plenty time to explore the beautiful gardens. It has two gift shops, a farm shop and a plant shop. You can purchase a drink, a sandwich, or a meal in one of the cafes or if you prefer bring your own food and have a picnic. After lunch we board the coach for the 15-minute journey to Runnymede where we board our boat. Our cruise with commentary will take us to the back garden of Windsor Castle with views of the Castle, Royal Farm and Queen Adelaide's Cottage. We will also go through Old Windsor Lock, the village of Datchet and Romney Lock. A cream tea will be provided during the cruise. Please mention any dietary requirements when booking. Any drinks bought on the boat must be paid for in cash.

Cost: £58.50 which includes entry to the garden, cruise and cream tea.

Depart: GG 8.30am. OA 8.35am. LR 8.45am. SG 8.50am.

Please telephone to book after 9.00am on Monday 14th April

Kathleen Fox, 72 Perry Street, Billericay, Essex CM12 0ND.

Telephone 01277 622342

★ ★ ★ ★ ★ ★ ★ ★ ★ ★ **BBC GARDENERS WORLD AUTUMN FAIR, AT AUDLEY END HOUSE AND GARDEN – 31ST AUGUST**

**TRIP WILL BE ADVISED IN
THE MAY'S PROGRAMME**

★ FORTHCOMING EVENT ★

**If concession prices are quoted (i.e. seniors, children) these should be requested at the time of booking or the full price will apply.
In the event that you need to cancel all efforts will be made to resell your tickets, however if we are unable to resell your tickets
you are liable for payment.**

PRIVACY NOTICE We understand that you consented to BDRA holding personal details about you when you subscribed as a member of the Billericay District residents' Association and a recipient of the Resident magazine. The information which we hold is your name and address, and we may hold additional information which you have provided such as your email address and/or telephone number. We hold this data for the purpose of delivering the Resident Magazine to you and to collect and administer your subscription payments. We will hold your personal information only for as long as is necessary for these purposes. Personal data is held securely and will not be shared with any third parties. You have the right to request to see what information we hold about you. You have the right to instruct us to delete your personal information from our records at any time. This would result in the termination of your membership of the BDRA.